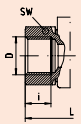
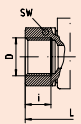
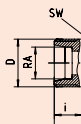
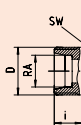
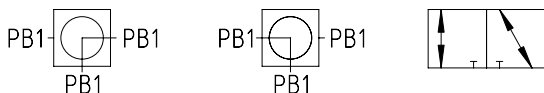


Maßänderungen vorbehalten.

Measurements subject to alteration.

Gehäuseteile Kugel Schaltwelle Kugeldichtung Schaltwellendichtung		Body Ball Stem Ball Sealing Stem Sealing		V4a (AISI 316) V4a (AISI 316) V4a (AISI 316) PTFE (bis/to 100 bar) FKM		V4a (AISI 316) V4a (AISI 316) V4a (AISI 316) POM NBR			
				Korrosive Medien Corrosive Media				Hydraulik - Standardausführung Hydraulics - Standard Version	
				-20°C bis/to 100°C				-20°C bis/to 100°C	
Anschlussart Connection		DN	LW	D	RA	Bestellzeichen Order-Code	Brutto-Preis Gross-Price Euro (€)	Bestellzeichen Order-Code	Brutto-Preis Gross-Price Euro (€)
<b>01</b> • Rohrgewinde • DIN ISO 228 • BSP Female Thread • DIN ISO 228		4	5,0	G 1/8"		BK3-G 1/8"-4445-L	*	BK3-G 1/8"-4423-LA	*
		6	6,0	G 1/4"		BK3-G 1/4"-4445-L	*	BK3-G 1/4"-4423-LA	324,00
		10	9,0	G 3/8"		BK3-G 3/8"-4445-L	*	BK3-G 3/8"-4423-LA	345,60
		13	11,5	G 1/2"		BK3-G 1/2"-4445-L	*	BK3-G 1/2"-4423-LA	373,85
		20	18,0	G 3/4"		BK3-G 3/4"-4445-L	*	BK3-G 3/4"-4423-LA	578,20
		25	22,0	G 1"		BK3-G 1"-4445-L	*	BK3-G 1"-4423-LA	639,70
		32	30,0	G 1 1/4"		BK3-G 1 1/4"-4445-L	*	BK3-G 1 1/4"-4423-LA	1254,45
		40	35,0	G 1 1/2"		BK3-G 1 1/2"-4445-L	*	BK3-G 1 1/2"-4423-LA	1415,65
		50	44,0	G 2"		BK3-G 2"-4445-L	*	BK3-G 2"-4423-LA	*
									
<b>02</b> • NPT-Innengewinde • ANSI B 2.1 • NPT Female Thread • ANSI B 2.1		4	5,0	1/8"-27 NPT		BK3-1/8"-NPT-4445-L	*	BK3-1/8"-NPT-4423-LA	*
		6	6,0	1/4"-18 NPT		BK3-1/4"-NPT-4445-L	*	BK3-1/4"-NPT-4423-LA	*
		10	9,0	3/8"-18 NPT		BK3-3/8"-NPT-4445-L	*	BK3-3/8"-NPT-4423-LA	*
		13	11,5	1/2"-14 NPT		BK3-1/2"-NPT-4445-L	*	BK3-1/2"-NPT-4423-LA	*
		20	18,0	3/4"-14 NPT		BK3-3/4"-NPT-4445-L	*	BK3-3/4"-NPT-4423-LA	*
		25	22,0	1"-11,5 NPT		BK3-1"-NPT-4445-L	*	BK3-1"-NPT-4423-LA	*
		32	30,0	1 1/4"-11,5 NPT		BK3-1 1/4"-NPT-4445-L	*	BK3-1 1/4"-NPT-4423-LA	*
		40	35,0	1 1/2"-11,5 NPT		BK3-1 1/2"-NPT-4445-L	*	BK3-1 1/2"-NPT-4423-LA	*
		50	44,0	2"-11,5 NPT		BK3-2"-NPT-4445-L	*	BK3-2"-NPT-4423-LA	*
									
<b>03</b> • Rohrverschraubung • Leichte Reihe DIN 2353 • For Compression Fitting • Light Series DIN 2353		4	5,0	M 12 x 1,5	6	BK3-6-L-4445-L	*	BK3-6-L-4423-LA	*
		6	6,0	M 14 x 1,5	8	BK3-8-L-4445-L	*	BK3-8-L-4423-LA	*
		8	7,0	M 16 x 1,5	10	BK3-10-L-4445-L	*	BK3-10-L-4423-LA	*
		10	9,0	M 18 x 1,5	12	BK3-12-L-4445-L	*	BK3-12-L-4423-LA	*
		13	11,5	M 22 x 1,5	15	BK3-15-L-4445-L	*	BK3-15-L-4423-LA	*
		13	11,5	M 26 x 1,5	18	BK3-18-L-4445-L	*	BK3-18-L-4423-LA	*
		20	18,0	M 30 x 2	22	BK3-22-L-4445-L	*	BK3-22-L-4423-LA	*
		25	18,0	M 36 x 2	28	BK3-28-L-4445-L	*	BK3-28-L-4423-LA	*
		32	30,0	M 45 x 2	35	BK3-35-L-4445-L	*	BK3-35-L-4423-LA	*
		40	35,0	M 52 x 2	42	BK3-42-L-4445-L	*	BK3-42-L-4423-LA	*
									
<b>04</b> • Rohrverschraubung • Schwere Reihe DIN 2353 • For Compression Fitting • Heavy Series DIN 2353		4	5,0	M 14 x 1,5	6	BK3-6-S-4445-L	*	BK3-6-S-4423-LA	*
		4	5,0	M 16 x 1,5	8	BK3-8-S-4445-L	*	BK3-8-S-4423-LA	*
		6	6,0	M 18 x 1,5	10	BK3-10-S-4445-L	*	BK3-10-S-4423-LA	*
		8	7,0	M 20 x 1,5	12	BK3-12-S-4445-L	*	BK3-12-S-4423-LA	*
		10	9,0	M 22 x 1,5	14	BK3-14-S-4445-L	*	BK3-14-S-4423-LA	*
		13	11,5	M 24 x 1,5	16	BK3-16-S-4445-L	*	BK3-16-S-4423-LA	*
		13	11,5	M 30 x 2	20	BK3-20-S-4445-L	*	BK3-20-S-4423-LA	*
		20	18,0	M 36 x 2	25	BK3-25-S-4445-L	*	BK3-25-S-4423-LA	*
		25	22,0	M 42 x 2	30	BK3-30-S-4445-L	*	BK3-30-S-4423-LA	*
		32	30,0	M 52 x 2	38	BK3-38-S-4445-L	*	BK3-38-S-4423-LA	*
									



Type LA: L-Bohrung 0° - 90° allseitig druckbeaufschlagbar  
Type LA: L-bore 0° - 90° pressured from all ports possible

\* Preise auf Anfrage / \* Prices on request