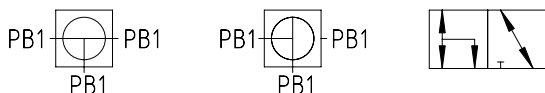


Maßänderungen vorbehalten.

Measurements subject to alteration.

Gehäuseteile Kugel Schaltwelle Kugeldichtung Schaltwellendichtung		Body Ball Stem Ball Sealing Stem Sealing				V4a (AISI 316) V4a (AISI 316) V4a (AISI 316) PTFE (bis/to 100 bar) FKM	V4a (AISI 316) V4a (AISI 316) V4a (AISI 316) POM NBR		
						Korrosive Medien Corrosive Media		Hydraulik - Standardausführung Hydraulics - Standard Version	
						-20°C bis/to 100°C		-20°C bis/to 100°C	
Anschlussart Connection	DN	LW	D	RA	Bestellzeichen Order-Code	Brutto-Preis Gross-Price Euro (€)	Bestellzeichen Order-Code	Brutto-Preis Gross-Price Euro (€)	
<b>01</b> • Rohrgewinde • DIN ISO 228 • BSP Female Thread • DIN ISO 228 	4	5,0	G 1/8"		BK3-G 1/8"-4445-T	*	BK3-G 1/8"-4423-TA	*	
	6	6,0	G 1/4"		BK3-G 1/4"-4445-T	*	BK3-G 1/4"-4423-TA	324,00	
	10	9,0	G 3/8"		BK3-G 3/8"-4445-T	*	BK3-G 3/8"-4423-TA	345,60	
	13	11,5	G 1/2"		BK3-G 1/2"-4445-T	*	BK3-G 1/2"-4423-TA	373,85	
	20	18,0	G 3/4"		BK3-G 3/4"-4445-T	*	BK3-G 3/4"-4423-TA	578,20	
	25	22,0	G 1"		BK3-G 1"-4445-T	*	BK3-G 1"-4423-TA	639,70	
	32	30,0	G 1 1/4"		BK3-G 1 1/4"-4445-T	*	BK3-G 1 1/4"-4423-TA	1254,45	
	40	35,0	G 1 1/2"		BK3-G 1 1/2"-4445-T	*	BK3-G 1 1/2"-4423-TA	1415,65	
	50	44,0	G 2"		BK3-G 2"-4445-T	*	BK3-G 2"-4423-TA	*	
<b>02</b> • NPT-Innengewinde • ANSI B 2.1 • NPT Female Thread • ANSI B 2.1 	4	5,0	1/8"-27-NPT		BK3-1/8"-NPT-4445-T	*	BK3-1/8"-NPT-4423-TA	*	
	6	6,0	1/4"-18 NPT		BK3-1/4"-NPT-4445-T	*	BK3-1/4"-NPT-4423-TA	*	
	10	9,0	3/8"-18 NPT		BK3-3/8"-NPT-4445-T	*	BK3-3/8"-NPT-4423-TA	*	
	13	11,5	1/2"-14 NPT		BK3-1/2"-NPT-4445-T	*	BK3-1/2"-NPT-4423-TA	*	
	20	18,0	3/4"-14 NPT		BK3-3/4"-NPT-4445-T	*	BK3-3/4"-NPT-4423-TA	*	
	25	22,0	1"-11,5 NPT		BK3-1"-NPT-4445-T	*	BK3-1"-NPT-4423-TA	*	
	32	30,0	1 1/4"-11,5 NPT		BK3-1 1/4"-NPT-4445-T	*	BK3-1 1/4"-NPT-4423-TA	*	
	40	35,0	1 1/2"-11,5 NPT		BK3-1 1/2"-NPT-4445-T	*	BK3-1 1/2"-NPT-4423-TA	*	
	50	44,0	2"-11,5 NPT		BK3-2"-NPT-4445-T	*	BK3-2"-NPT-4423-TA	*	
<b>03</b> • Rohrverschraubung • Leichte Reihe DIN 2353 • For Compression Fitting • Light Series DIN 2353 	4	5,0	M 12 x 1,5	6	BK3-6-L-4445-T	*	BK3-6-L-4423-TA	*	
	6	6,0	M 14 x 1,5	8	BK3-8-L-4445-T	*	BK3-8-L-4423-TA	*	
	8	7,0	M 16 x 1,5	10	BK3-10-L-4445-T	*	BK3-10-L-4423-TA	*	
	10	9,0	M 18 x 1,5	12	BK3-12-L-4445-T	*	BK3-12-L-4423-TA	*	
	13	11,5	M 22 x 1,5	15	BK3-15-L-4445-T	*	BK3-15-L-4423-TA	*	
	13	11,5	M 26 x 1,5	18	BK3-18-L-4445-T	*	BK3-18-L-4423-TA	*	
	20	18,0	M 30 x 2	22	BK3-22-L-4445-T	*	BK3-22-L-4423-TA	*	
	25	22,0	M 36 x 2	28	BK3-28-L-4445-T	*	BK3-28-L-4423-TA	*	
	32	30,0	M 45 x 2	35	BK3-35-L-4445-T	*	BK3-35-L-4423-TA	*	
<b>04</b> • Rohrverschraubung • Schwere Reihe DIN 2353 • For Compression Fitting • Heavy Series DIN 2353 	4	5,0	M 14 x 1,5	6	BK3-6-S-4445-T	*	BK3-6-S-4423-TA	*	
	4	5,0	M 16 x 1,5	8	BK3-8-S-4445-T	*	BK3-8-S-4423-TA	*	
	6	6,0	M 18 x 1,5	10	BK3-10-S-4445-T	*	BK3-10-S-4423-TA	*	
	8	7,0	M 20 x 1,5	12	BK3-12-S-4445-T	*	BK3-12-S-4423-TA	*	
	10	9,0	M 22 x 1,5	14	BK3-14-S-4445-T	*	BK3-14-S-4423-TA	*	
	13	11,5	M 24 x 1,5	16	BK3-16-S-4445-T	*	BK3-16-S-4423-TA	*	
	13	11,5	M 30 x 2	20	BK3-20-S-4445-T	*	BK3-20-S-4423-TA	*	
	20	18,0	M 36 x 2	25	BK3-25-S-4445-T	*	BK3-25-S-4423-TA	*	
	25	22,0	M 42 x 2	30	BK3-30-S-4445-T	*	BK3-30-S-4423-TA	*	
32	30,0	M 52 x 2	38	BK3-38-S-4445-T	*	BK3-38-S-4423-TA	*		



Typ TA: T-Bohrung 0° - 90° allseitig druckbeaufschlagbar  
 Type TA: T-bore 0° - 90° pressured from all ports possible

\* Preise auf Anfrage / \* Prices on request